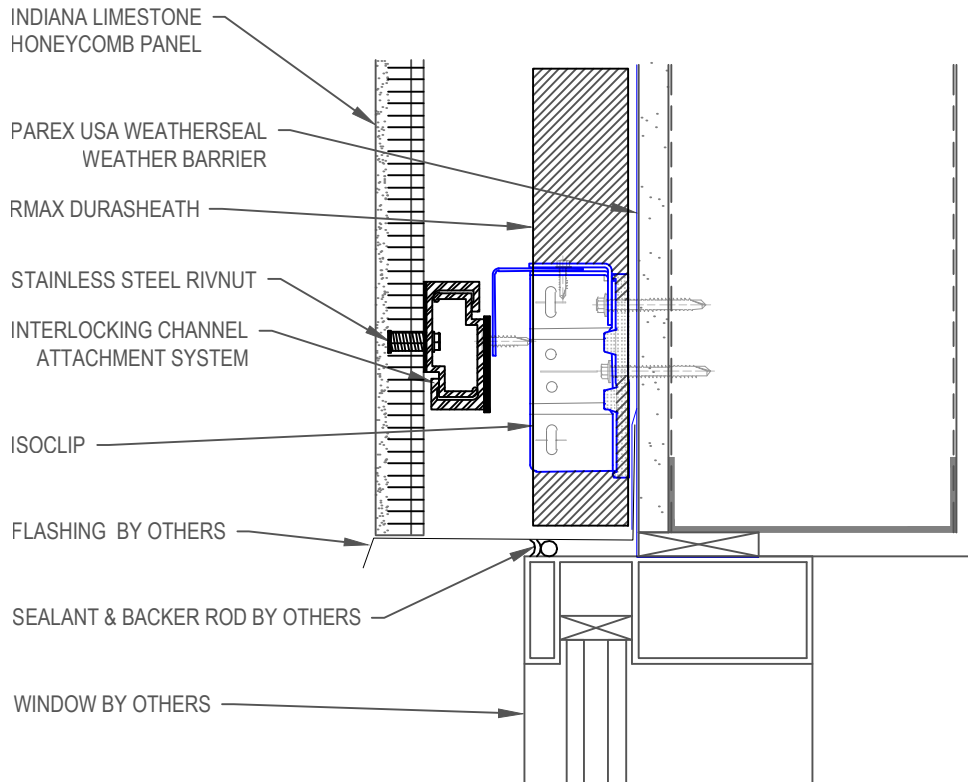


# LITECORE®

LIGHTWEIGHT LIMESTONE PANEL SYSTEM

by Indiana Limestone  
Company

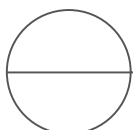
INDIANA LIMESTONE  
123 SOUTH COLLEGE AVE  
BLOOMINGTON, IN 47404  
PHONE: (812) 275-7525  
FAX: (812) 275-3344  
[www.indianalimestonecompany.com](http://www.indianalimestonecompany.com)



SECTION VIEW  
FLUSH WINDOW + CI + ISOCLIP

#### NOTES:

1. INSTALLATION TO BE COMPLETED IN ACCORDANCE WITH MANUFACTURER'S SPECIFICATIONS.
2. DO NOT SCALE DRAWING.
3. THIS DRAWING IS INTENDED FOR USE BY ARCHITECTS, ENGINEERS, CONTRACTORS, CONSULTANTS AND DESIGN PROFESSIONALS FOR PLANNING PURPOSES ONLY. THIS DRAWING MAY NOT BE USED FOR CONSTRUCTION.
4. ALL INFORMATION CONTAINED HEREIN WAS CURRENT AT THE TIME OF DEVELOPMENT BUT MUST BE REVIEWED AND APPROVED BY THE PRODUCT MANUFACTURER TO BE CONSIDERED ACCURATE.
5. CONTRACTOR'S NOTE: FOR PRODUCT AND COMPANY INFORMATION VISIT [www.CADdetails.com/info](http://www.CADdetails.com/info) AND ENTER REFERENCE NUMBER ILCO WINDOW HEAD CI + ISOCLIP



## HONEYCOMB PANELS

HEAD DETAIL: FLUSH WINDOW