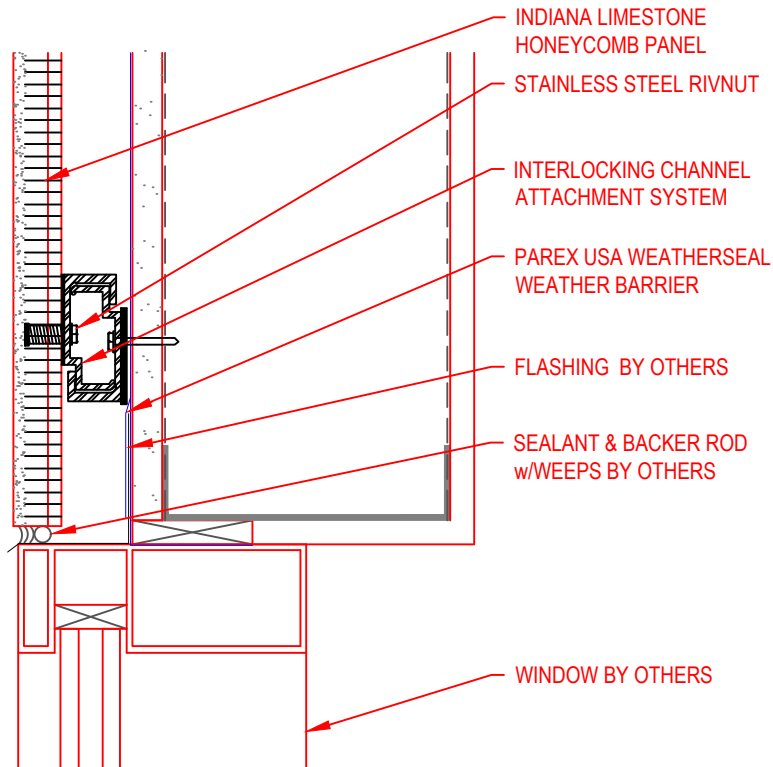


LITECORE®

LIGHTWEIGHT LIMESTONE PANEL SYSTEM

by Indiana Limestone
Company

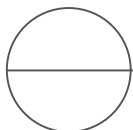
INDIANA LIMESTONE
123 SOUTH COLLEGE AVE
BLOOMINGTON, IN 47404
PHONE: (812) 275-7525
FAX: (812) 275-3344
www.indianalimestonecompany.com



SECTION VIEW
FLUSH WINDOW

NOTES:

1. INSTALLATION TO BE COMPLETED IN ACCORDANCE WITH MANUFACTURER'S SPECIFICATIONS.
2. DO NOT SCALE DRAWING.
3. THIS DRAWING IS INTENDED FOR USE BY ARCHITECTS, ENGINEERS, CONTRACTORS, CONSULTANTS AND DESIGN PROFESSIONALS FOR PLANNING PURPOSES ONLY. THIS DRAWING MAY NOT BE USED FOR CONSTRUCTION.
4. ALL INFORMATION CONTAINED HEREIN WAS CURRENT AT THE TIME OF DEVELOPMENT BUT MUST BE REVIEWED AND APPROVED BY THE PRODUCT MANUFACTURER TO BE CONSIDERED ACCURATE.
5. CONTRACTOR'S NOTE: FOR PRODUCT AND COMPANY INFORMATION VISIT www.CADdetails.com/info AND ENTER REFERENCE NUMBER ILCO WINDOW HEAD NO CI



HONEYCOMB PANELS

HEAD DETAIL: FLUSH WINDOW